

District:

ELK CITY
BECKHAM County

222 West Broadway Ave.
 Elk City, OK 73644
 (580) 225-0175

Community Characteristics

Community Group: D2

Socioeconomic Data

	District Community	State Average
Ethnic Makeup Based upon Fall Enrollment:		
Caucasian	67%	59%
Black	5%	9%
Asian	1%	2%
Hispanic	23%	16%
Native American	5%	15%
Average Property Valuation per ADM (12/2015)	\$47,634	\$47,329
Students Eligible for Free/Reduced Lunch	65%	61%

U.S. Census Data

American Community Survey (2010-2014 5-Year Estimates):

	District	State
District Population	11,887	7,387
Poverty Rate	13%	17%
Unemployment Rate	3%	7%
Average Household Income	\$70,730	\$62,871
Single-Parent Families	42%	34%
Highest Educational Level for Adults Age 25+		
College Degree	17%	24%
H.S. Diploma w/o College Degree	67%	63%
Less than 12th Grade Education	16%	13%

Preparation, Motivation and Parental Support

KG-3rd Graders Receiving Reading Remediation	48%	39%
Average Number of Days Absent per Student	10.2	9.8
Mobility Rate (Incoming Students)	7%	10%
Suspension to Student Ratio: (Higher number is better.)		
1 suspension (<= 10 days) per ___ students	29.3	13.1
1 suspension (> 10 days) per ___ students	208.0	155.1
Parents Attending at least 1 Parent/Teacher Conf.	81%	74%
Patrons' Volunteer Hours per Student	2.5	3.4

Juvenile Offenders & Offenses (OJA)

One out of every ___ students was charged.	78.9	108.6
Of those charged, each averaged ___ offense(s).	2.0	2.1
Of those charged, ___ were alleged gang members.	2	0.4

Symbols Used on this Report:

ADM = Average Daily Membership (Average Enrollment)
 FTE = Full Time Equivalent
 NA = Not Applicable
 ** = Data Protected by Privacy Laws
 FTR = School/District Failed to Respond with Useable Data
 DNA = Data Not Available from Providing Agency
 RM = Revised Methodology



**Office of Educational
 Quality and Accountability**

840 Research Parkway, Suite 455
 Oklahoma City, OK 73104
 (405) 522-5399 Fax: (405) 525-0373
 Web Address: www.EdProfiles.info

District Educational Process

Grade Organization, District Area & Enrollment

This district offered grades EC-12 in school year 2014-2015. It was comprised of 4 Elementary School(s), 1 MS/JHS, and 1 High School(s). The district covered 63 square miles, with 35.8 students per square mile.

	District	Community Group Avg.	State Avg.
2013/2014 Average Enrollment (ADM)	2,346.2	2,960.8	1,292.2
2014/2015 Average Enrollment (ADM)	2,258.0	2,947.7	1,299.4
Difference from 2013/2014 to 2014/2015	-88.2 (-3.8%)	-13.1	7.3

Student Programs

Students Identified as Gifted/Talented	7.9%	12.9%	14.2%
Students in Special Education	14.0%	14.7%	15.4%
Students as English Language Learners (ELL)	8.6%	7.9%	7.1%

Classroom Teachers & Professional Support (FTE)

Non-Special Ed. Teachers:			
Number of Teachers	131.2	164.7	72.4
Avg. Salary (w/ Fringe)	\$42,672	\$44,716	\$44,754
Teachers w/ Advanced Degree(s)	17.9%	29.3%	24.5%
Avg. Years of Experience	12.1	12.3	12.2
Special Education Teachers	13.2	19.6	8.5
Counselors	7.5	7.9	3.1
Other Certified Professional Staff	10.2	15.2	6.9

School & District Administration (FTE)

School & District Administrators	13.3	16.0	6.9
Average Salary per Administrative FTE	\$71,678	\$75,121	\$78,349
Teachers per Administrator	10.9	11.5	11.7

District Revenues (ALL FUNDS)

Local & County	36.6%	34.6%	40.8%
State	52.8%	52.9%	47.7%
Federal	10.6%	12.5%	11.6%

District Expenditures (ALL FUNDS)

	District		Community Group Avg.		State Average	
	%	\$/ADM	%	\$/ADM	%	\$/ADM
Instruction	55.5%	\$4,212	54.5%	\$4,233	53.0%	\$4,177
Student Support	6.4%	\$487	6.9%	\$538	7.0%	\$548
Instructional Support	2.3%	\$171	4.0%	\$309	3.8%	\$296
District Administration	2.4%	\$181	2.6%	\$199	2.9%	\$231
School Administration	5.8%	\$436	5.8%	\$452	5.7%	\$451
District Support	18.7%	\$1,421	18.2%	\$1,414	17.9%	\$1,411
Other	8.9%	\$678	8.1%	\$627	9.7%	\$761
Total	100.0%	\$7,586	100.0%	\$7,771	100.0%	\$7,875
Debt Service in Addition to Above		\$0		\$632		\$845

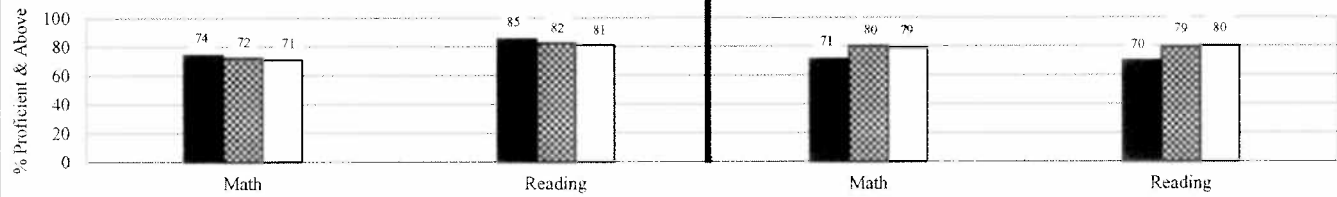
Average HS Curriculum (Units Offered in Selected Subject Areas)

	District	Community Group Avg.	State Average
Language Arts	8.0	10.4	7.8
Science	8.0	8.9	6.1
Math	8.0	8.9	6.5
Social Studies	7.0	7.4	5.4
Fine Arts	18.0	11.5	7.0
Languages (non-English)	2.0	3.9	2.5
Total	51.0	50.9	35.3

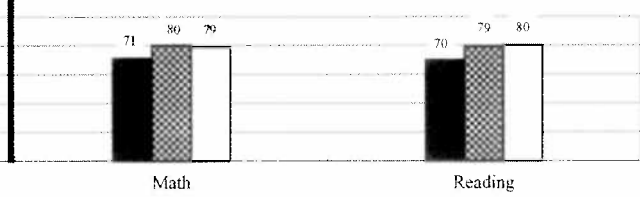
Student Performance (Regular Education Students, Full Academic Year)

District: ELK CITY

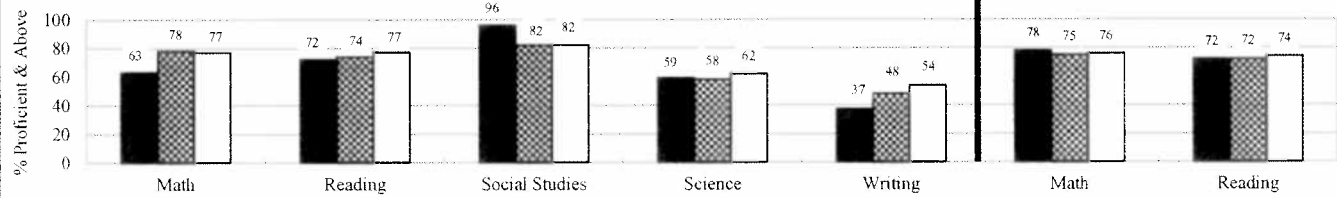
3rd Grade Tests*



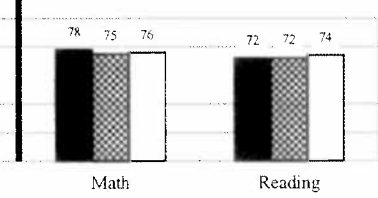
4th Grade Tests*



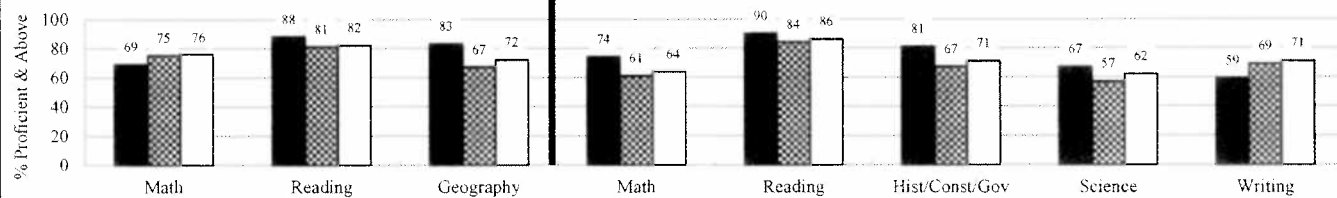
5th Grade Tests*



6th Grade Tests*



7th Grade Tests*

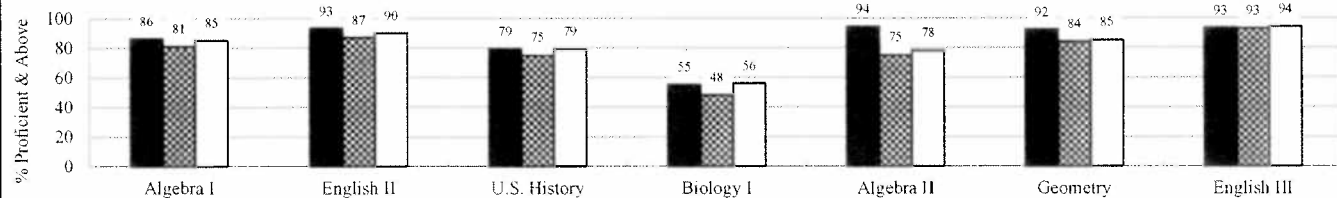


8th Grade Tests*

(Students taking Algebra I do not participate in 8th grade math test.)

End-of-Instruction Tests*

(Students are exempt from certain EOI tests if they passed qualified alternative assessments.)



District
 Community Group
 State

Additional High School Performance Measures

	District	Community Group Average	State Average
Senior Graduation Rate (2015 Seniors)	97.4%	97.4%	98.2%
4-Year Dropout Rate (Class of 2015)	9.8%	10.3%	7.8%
Average GPA of HS Seniors (2015 Seniors)	3.2	3.0	3.1
Career-Tech Occupationally-Specific Program Participation Rate (2015 Seniors)	62.8%	51.2%	49.5%
Average ACT Score (Class of 2015)	19.8	19.7	20.7
HS Graduates Completing Regents' College-Bound Curriculum (2015 Seniors)	82.0%	78.9%	80.5%
Out-of-State College-Going Rate (2015 Seniors)	2.7%	4.7%	5.9%
Oklahoma College-Going Rate			
Oklahoma College Freshmen taking at least one remedial course in Math, English, Science, or Reading			
Oklahoma College Freshmen with GPA 2.0 or Above			

New methodologies are under development.